

BALL VALVE - LEVER HANDLE F/F

Model: EH1080

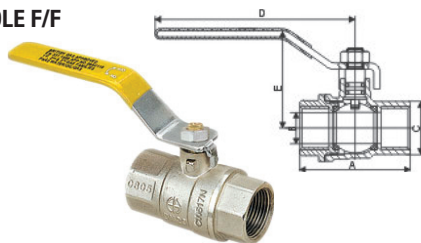
Advantica british gas, wras,
en331 approved ball valves
Forged brass gas ball valve;
yellow stainless steel lever handle;
FxF
ISO7/1 thread,
EN331 standard
PN40~PN25(5MOP/20MOP)

Size:1/4"~2"

TECHNICAL FEATURES:

According to EN331 standard.
Minimum and maximum working temperature:
-20°C, 120°C.
Available: in all sizes from 1/4" up to 4"

Available with red handle.



MATERIALS:

Valve Body: CW617N
Handle: Stainless Steel
Ball: Hard chrome-plated brass
Seal: P.T.F.E.
Stem: Brass
Stem-seal: Brass
O-Ring: NBR

Size	1/4"	3/8"	1/2"	3/4"	1"	1 1/4"	1 1/2"	2"
A	41.8	45	53	61	73	84	98	118
B	8	10	15	20	25	32	40	50
C	21.5	25	32	38.5	47	55.5	68	86
D	65.5	65.5	96	96	120	114.5	176	176
E	41	42	47.5	50	58.5	68	81	91

PC 65 10

BALL VALVE - LEVER HANDLE M/F

Model: EH1081

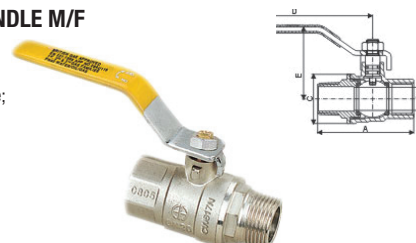
Forged brass gas ball valve;
yellow stainless steel lever handle;
Fxm
ISO7/1 thread,
EN331 standard
PN40~PN25(5MOP/20MOP)

Size:1/4"~2"

TECHNICAL FEATURES:

According to EN331 standard.
Minimum and maximum working temperature:
-20°C, 120°C.
Available: in all sizes from 1/4" up to 2".

Available with red handle.



MATERIALS:

Valve Body: CW617N
Handle: Stainless Steel
Ball: Hard chrome-plated brass
Seal: P.T.F.E.
Stem: Brass
Stem-seal: Brass
O-Ring: NBR

Size(mm)	1/4"	3/8"	1/2"	3/4"	1"	1-1/4"	1 1/2"	2"
A	52	55	62	69.5	79	94.5	104.5	130 x
B	8	10	15	20	25	32	40	50
C	21.5	25	32	38.5	47	55.5	68	83
D	65.5	65.5	96	96	120	114.5	176	176
E	41	42	47.5	50	50	68	81	87.5

PC 65 10

BALL VALVE - T HANDLE F/F

Model: EH1082

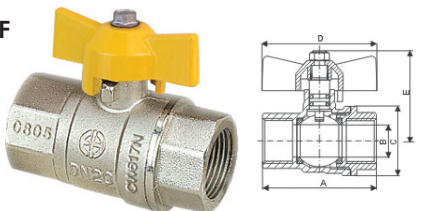
Forged brass gas ball valve;
yellow butterfly handle;
FxF
ISO7/1 thread,
EN331 standard
PN40(5MOP/20MOP)

Size:1/4"~1"

TECHNICAL FEATURES:

According to EN331 standard.
Minimum and maximum working temperature:
-20°C, 120°C.
Available: in all sizes from 1/4" up to 2".

Available with red handle.



MATERIALS:

Valve Body: CW617N
Handle: Aluminium
Ball: Hard chrome-plated brass
Seal: P.T.F.E.
Stem: Brass
Stem-seal: Brass
O-Ring: NBR

Size(mm)	1/4"	3/8"	1/2"	3/4"	1"
A	41.8	45	53	61	73
B	8	10	15	20	25
C	21.5	25	32	38.5	47
D	53.5	53.5	53	53	62
E	36.5	37	41.5	46	55.5

PC 65 10

BALL VALVE - T HANDLE M/F

Model: EH1083

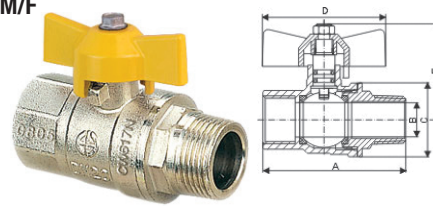
Forged brass gas ball valve;
yellow butterfly handle;
Fxm
ISO7/1 thread,
EN331 standard
PN40(5bar)

Size:1/4"~1"

TECHNICAL FEATURES:

According to EN331 standard.
Minimum and maximum working temperature:
-20°C, 120°C.
Available: in all sizes from 1/4" up to 2".

Available with red handle.



MATERIALS:

Valve Body: CW617N
Handle: Aluminium
Ball: Hard chrome-plated brass
Seal: P.T.F.E.
Stem: Brass
Stem-seal: Brass
O-Ring: NBR

Size(mm)	1/4"	3/8"	1/2"	3/4"	1"
A	52	55	62	69.5	79
B	8	10	15	20	25
C	21.5	25	32	38.5	47
D	53.5	53.5	53	53	62
E	36.5	37	41.5	46	55.5

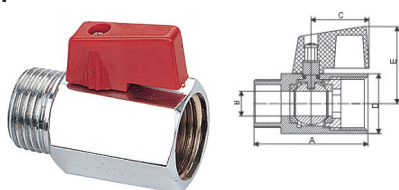
PC 65 10

MINI BALL VALVE - M/F

Model: EH1106

C.P forged mini ball valve
red handle; Fxm
ISO228 thread

Size:1/8"~3/4"



TECHNICAL FEATURES:

Suitable for domestic water services, heating
and air-conditioning plants, compressed air
systems.
Minimum and maximum working temperature:
-15°C, 100°C.
Available: in all sizes from 1/8" up to 3/4"

MATERIALS:

Valve Body: C.P. Polished Brass
Handle: ABS
Ball: Hard chrome-plated brass
Seal: P.T.F.E.
Stem: Brass
Stem-seal: Brass
O-Ring: NBR

Size(mm)	1/8"	1/4"	3/8"	1/2"	3/4"
A	36	39.5	40	46	54
B	5.5	8	8	9.5	13.5
C	22	22	22	22	22
D	19	21	21	25	30
E	26.5	28	28	29.5	32.5

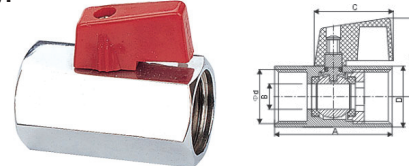
PC 65 11

MINI BALL VALVE - F/F

Model: EH1107

C.P forged mini ball valve
red handle; FxF
ISO228 thread

Size:1/8"~3/4"



TECHNICAL FEATURES:

Suitable for domestic water services, heating
and air-conditioning plants, compressed air
systems.
Minimum and maximum working temperature:
-15°C, 100°C.
Available: in all sizes from 1/8" up to 3/4"

MATERIALS:

Valve Body: C.P. Polished Brass
Handle: ABS
Ball: Hard chrome-plated brass
Seal: P.T.F.E.
Stem: Brass
Stem-seal: Brass
O-Ring: NB

Size(mm)	1/8"	1/4"	3/8"	1/2"	3/4"
A	36	39.5	40	46	54
B	5.5	8	8	9.5	13.5
C	22	22	22	22	22
D	19	21	21	25	30
E	26.5	28	28	29.5	32.5

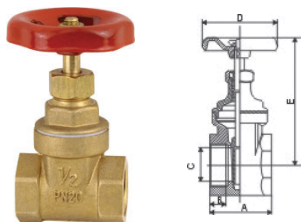
PC 65 11

GATE VALVE

Model: EH1203

Italy type forged brass
gate valve, PN20
ISO228 thread

Size: 1/2"~4"



TECHNICAL FEATURES:

Suitable for domestic water
services and heating plants.
Minimum and maximum working
temperature: 0°C, 120°C in absence of steam.
Available: in all sizes from 1/2" up to 4"

MATERIALS:

Valve Body: Brass
Handle: Steel
Stem: Brass
Seat: Brass
Bonnet: Brass
O-Ring: P.T.F.E

Size(mm)	1/2"	3/4"	1"	1-1/4"	1 1/2"	2"
A	41.7	45.9	51.1	59.2	63	66.4
B	12.8	14.3	16.3	17	17	18.4
C	14.2	18.1	23.2	31.6	36	47.1
D	50.5	55.5	58.5	69.7	80	90
E	71.9	80.2	87.4	113.6	135	183.6

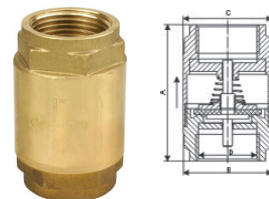
PC 65 50

CHECK VALVE

Model: EH1231

EUROPA model forged
brass check valve,
ISO228 thread
PN16

Size: 3/8"~4"



TECHNICAL FEATURES:

Suitable for domestic water services, heating
and air-conditioning plants, compressed air
systems. It can be installed in any position:
vertical, horizontal, oblique.
Minimum and maximum working
temperature:
-20°C, 100°C
Available: in all sizes from 3/8" up to 4"

MATERIALS:

Valve Body: Brass
Plate: Brass
Seal: NBR
Stem: Brass
Spring: SS304
Seat Washer: NBR

Size(mm)	3/8"	1/2"	3/4"	1"	1-1/4"	1-1/2"	2"
A	52	57.5	64	71.5	81.5	93.5	98.5
B	28	34	40.5	46	59.7	69.2	86.5
C	S20	S26.8	S32.6	S39.5	49.5	S54.5	S69
D	3/8	G1/2	G3/4	G1	G1-1/4	G1-1/2	G2
E	42	47.5	50	50	68	81	87.5

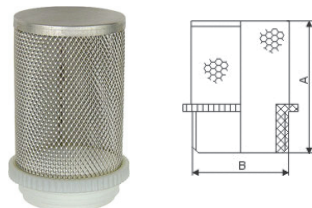
PC 65 20

SS FILTER

Model: EH1234

S.S filter only
ISO228 thread

Size: 3/8"~4"



TECHNICAL FEATURES:

Strainer in stainless steel
Threaded end in nylon

MATERIALS:

Stainless steel and nylon

Size(mm)	3/8"	1/2"	3/4"	1"	1-1/4"	1-1/2"	2"	2-1/2"	3"	4"
A	42	47	57	69	75	83	98	123	138	153
B	22.5	28	33	41.5	50	55	68	102	102	129

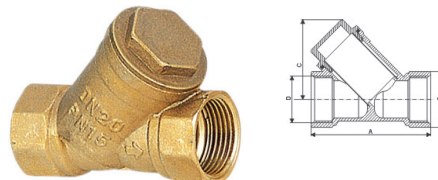
PC 65 60

Y-STRAINER

Model: EH1240

Forged brass y-strainer,
brass, PN20
ISO228 thread

Size: 3/8"~2"



TECHNICAL FEATURES:

Suitable for domestic water services,
heating and air-conditioning plants,
compressed air systems.
Minimum and maximum working
temperature:
-20°C, 110°C.
Available: in all sizes from 3/8" up to 2"

MATERIALS:

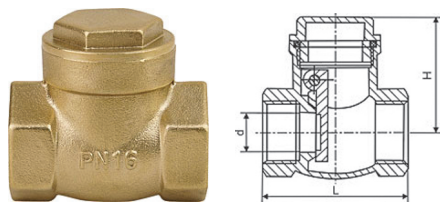
Valve Body: Brass
Cap: Brass
Filter: Stainless steel

Size(mm)	3/8"	1/2"	3/4"	1"	1-1/4"	1-1/2"	2"
A	55	62	69.5	79	94.5	104.5	130 x
B	10	15	20	25	32	40	50
C	25	32	38.5	47	55.5	68	83
D	65.5	96	96	120	114.5	176	176
E	42	47.5	50	50	68	81	87.5

PC 65 80

SWING CHECK VALVE

Model: EH1227



TECHNICAL FEATURES:

Nominal Pressure: 1.6MPa
Working Medium: Water, Non-corrosive liquid, pneumatic, hot water, oil
Working Temperature: 90°C
Pipe Thread to ISO228
Available: up to 4"

Size(mm)	1/2"	3/4"	1"	1-1/4"	1 1/2"	2"
DN	15	20	25	32	40	50
d	13	19	23	30	36	46
H	35	40	47	52	58	67
L	48	58	67	74	86	95

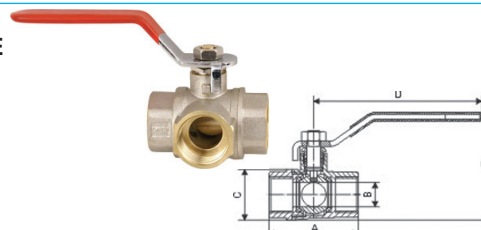
PC 65 40

3-WAY BALL VALVE

Model: EH1032

Forged brass full flow ball
valve, 3-way valve
ISO228 thread
PN40

Size: 1/2", 3/4"



TECHNICAL FEATURES:

Suitable for domestic water services, heating
and air-conditioning plants, compressed air
systems.

Minimum and maximum working temperature:
-15°C, 120°C.
Available: in all sizes from 1/2" up to 3/4".

MATERIALS:

Valve Body: Brass
Handle: Steel
Ball: Hard chrome-plated brass
Seal: P.T.F.E.
Stem: Brass
Stem-seal: Brass
O-Ring: P.T.F.E.

Size(mm)	1/2"	3/4"
A	58.35	64.4
B	14.2	20
C	31.2	38.6
D	107.9	107.9
E	55.6	59.6

PC 65 10

2PC LIGHT DUTY BALL VALVE 1000PSI

Model: BTL-2F

Size: 1/4"~4" FULL BORE (1000PSI)

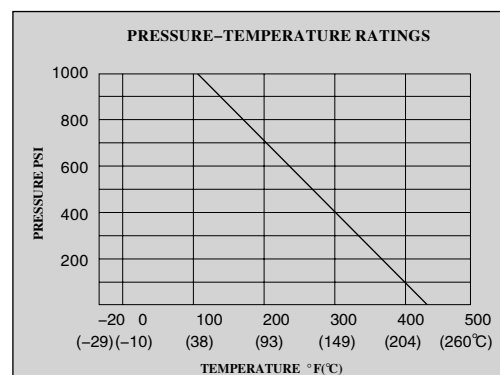
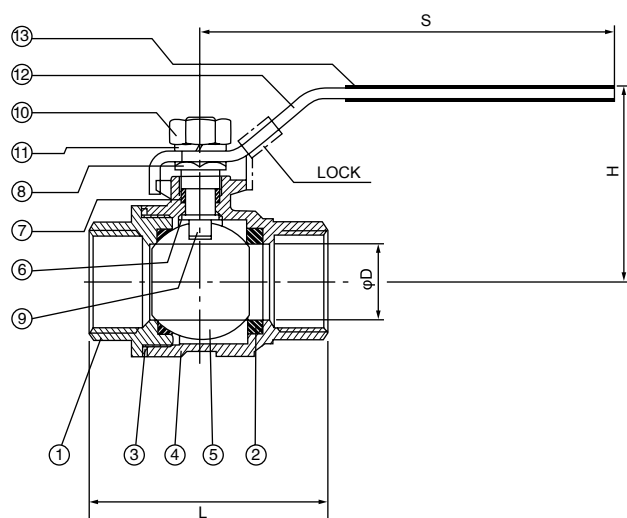


Threaded: BSPT, BSP, NPT, DIN2999, ISO 228/1

Materials: CF8M (SS316), CF8 (SS304)

Features:

- ▲ Investment casting body
- ▲ Working pressure 1000PSI for W.O.G.
- ▲ Adjustable stem packing
- ▲ Pure teflon seals and seats
- ▲ Temperature range: -60 to 450° F
- ▲ Blow-out proof stem and safe pressure-reducing hole
- ▲ 100% leakage tested at 100PSI air under water
- ▲ Hydrostatic test pressure: 1500PSI
- ▲ Locking device (optional)



MATERIAL LIST

NO.	PARTS NAME	MATERIAL	Q'TY
1	CAP	316	1
2	BALL SEAT	PTFE	2
3	JOINT GASKET	PTFE	1
4	BODY	316	1
5	BALL	316	1
6	THRUST WASHER	PTFE	1
7	STEM PACKING	PTFE	1
8	GLAND NUT	304	1
9	STEM	316	1
10	STEM NUT	304	1
11	SPRING WASHER	304	1
12	HANDLE	304	1
13	PLASTIC SLEEVE	PVC	1

DIMENSION LIST

SIZE	D	L	H	S
1/4"	12.7	47.3	46.6	99.5
3/8"	12.7	47.3	46.6	99.5
1/2"	15.0	58.2	48.2	99.5
3/4"	20.0	65.5	61.7	126.5
1"	25.0	76.5	69.3	126.5
1 1/4"	32.0	90.0	80.7	153.0
1 1/2"	38.0	98.3	87.2	153.0
2"	50.8	121.7	95.4	192.0
2 1/2"	65.0	145.2	119.5	248.0
3"	76.0	167.0	130.0	248.0
4"	100.0	224.0	167.2	320.0

3PC BALL VALVE(THREADED) 1000PSI

Model: BT-3F

Size: 1/4"~4" FULL BORE (1000PSI)

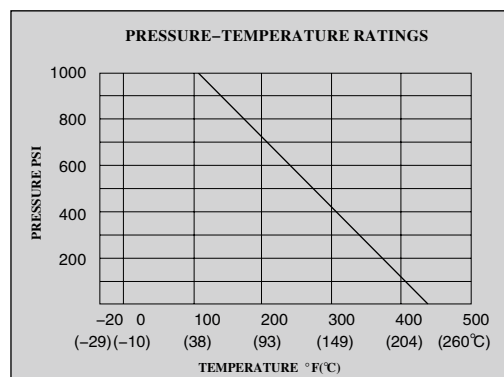
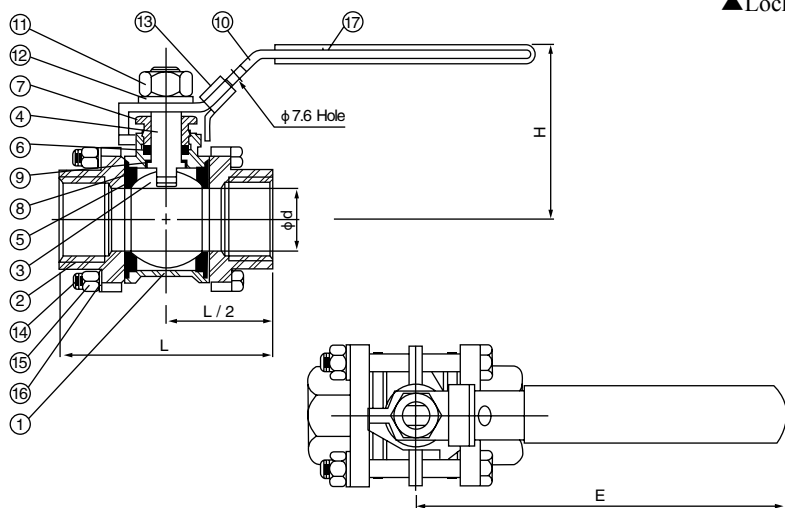
Threaded:BSPT.BSP.NPT.DIN2999.ISO 228/1

Materials:CF8M(SS316),CF8(SS304)



Features:

- ▲Investment casting body and cap
- ▲Working pressure 1/4"~2" 1000PSI, 2 1/2"~4" 800PSI
- ▲Adjustable stem packing
- ▲Pure teflon seals and seats
- ▲Temperature range:-60 to 450° F
- ▲Blow-out proof stem
- ▲100% leakage tested at 100PSI air under water
- ▲Hydrostatic test pressure:
1/4"~2" 1500PSI, 2 1/2"~4" 1200PSI
- ▲Locking device(optional)



MATERIAL LIST

NO.	PARTS NAME	MATERIAL	Q'TY
1	BODY	CF8M	1
2	END CAP	CF8M	2
3	BALL	CF8M	1
4	STEM	316	1
5	BALL SEAT	PTFE	2
6	STEM PACKING	PTFE	2
7	GLAND NUT	304	1
8	END SEAL	PTFE	2
9	THRUST WASHER	PTFE	1
10	HANDLE	304	1
11	STEM NUT	304	8
12	SPRING WASHER	304	1
13	LOCKING DEVICE	304	1
14	BOLTS	304	4
15	BOLT NUTS	304	8
16	BOLT WASHERS	304	8
17	PLASTIC SLEEVE	PVC	1

DIMENSION LIST

SIZE	D	L ± 0.5	H	E
1/4"	12.7	57.50	45.50	99.5
3/8"	12.7	59.00	45.50	99.5
1/2"	15.0	62.80	48.00	99.5
3/4"	20.0	78.00	61.50	126.5
1"	25.0	82.20	68.00	126.5
1 1/4"	32.0	97.60	79.00	153.0
1 1/2"	38.0	107.60	86.50	153.0
2"	50.0	119.70	94.50	192.0
2 1/2"	65.0	167.20	119.50	248.0
3"	76.0	175.60	130.00	248.0
4"	100.0	219.50	167.00	320.0

3PC BALL VALVE WITH ACTUATOR ISO5211 1000PSI

Model: BT-3F-DM

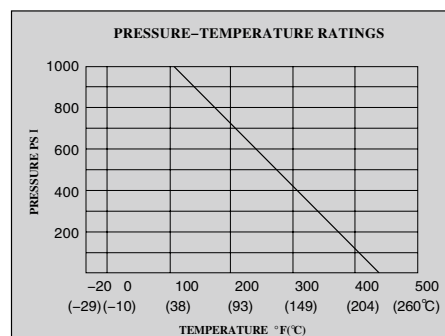
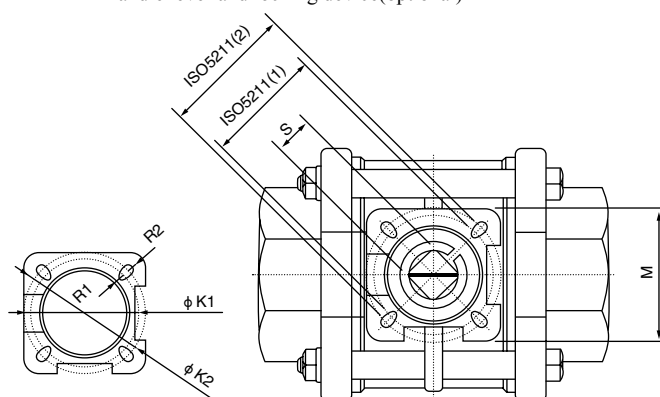
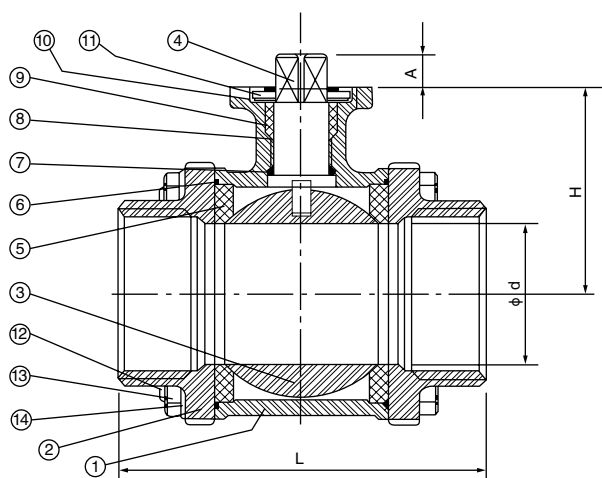
**Size: 1/4" ~ 4" FULL BORE (1000PSI),
Direct Mounting**

Threaded: BSPT, BSP, NPT, DIN 2999, ISO 228/1

Materials: CF8M (SS316), CF8 (SS304)

Features:

- ▲ Investment casting body and cap
- ▲ Working pressure 1/4" ~ 2" 1000PSI, 2 1/2" ~ 4" 800PSI
- ▲ Adjustable stem packing
- ▲ Pure teflon seals and seats
- ▲ Temperature range: -60 to 450° F
- ▲ Blow-out proof stem
- ▲ 100% leakage tested at 100PSI air under water
- ▲ Hydrostatic test pressure:
1/4" ~ 2" 1500PSI, 2 1/2" ~ 4" 1200PSI
- ▲ ISO-5211 direct mounting pad
(No need for bracket and adapter)
- ▲ Handle lever and locking device (optional)



MATERIAL LIST

NO.	PART NAME	MATERIAL	Q'TY
1	BODY	CF8M	2
2	CAP	CF8M	1
3	BALL	CF8M	1
4	STEM	TYPE 316	1
5	SEAT	PTFE	2
6	GASKET	PTFE	2
7	THRUST WASHER	PTFE	1
8	STEM PACKING	PTFE	1
9	GLAND NUT	304	1
10	BEVEL WASHER	304	1
11	SNAP RING	304	1
12	BOLTS	304	4
13	BOLT NUTS	304	8
14	BOLT WASHERS	304	8

DIMENSION LIST

SIZE	A	H	D	L ± 0.5
1/4"	9.0	38.5	12.7	60.3
3/8"	9.0	38.5	12.7	60.3
1/2"	9.0	39.2	15.0	65.5
3/4"	9.0	40.5	20.0	79.0
1"	11.0	49.0	25.0	86.0
1 1/4"	11.0	54.0	32.0	105.0
1 1/2"	14.0	63.2	38.0	118.3
2"	14.0	72.4	50.0	133.0
2 1/2"	19.0	96.5	65.0	166.0

GATE VALVE 200PSI

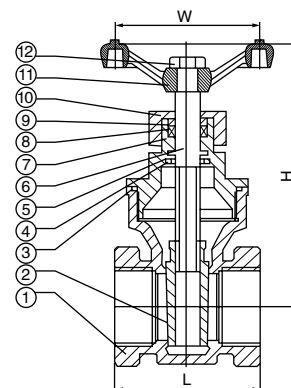


Model: GAV-200

Size: 1/2" ~ 2"

Features:

- ▲ Full bore
- ▲ Working pressure: 200PSI
- ▲ Female threaded end: BSPT.NPT.DIN2999
- ▲ Materials: CF8M(SS316), CF8(SS304)



MATERIAL LIST

NO.	PART NAME	MATERIAL	
1	BODY	CF8M	CF8
2	DISC	CF8M	CF8
3	SEAL RING	SS316	SS316
4	SNAP SPRING	316	
5	WASHER	PTFE	
6	STEM	SS316	SS304
7	BONNET	CF8M	CF8
8	PTFE	PTFE	
9	GASKET	PTFE	
10	GLAND NUT	SS316	
11	HANDWHEEL	HT(C.R.)	
12	NUT	SS316	

DIMENSION LIST

SIZE	d	H	L	W
1/2"	15	105	50	70
3/4"	20	108	60	70
1"	25	135	65	80
1-1/4"	32	145	75	80
1-1/2"	40	155	85	90
2"	50	185	95	100

GLOBE VALVE 200PSI

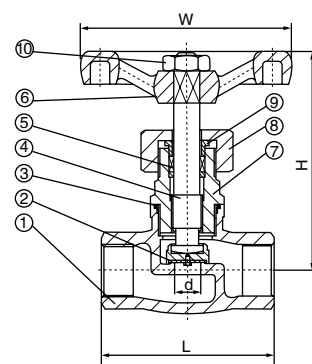


Model: GLV-200

Size: 1/2" ~ 2"

Features:

- ▲ Full bore
- ▲ Working pressure: 200PSI
- ▲ Female threaded end: BSPT.NPT.DIN2999
- ▲ Materials: CF8M(SS316), CF8(SS304)



MATERIAL LIST

NO.	PART NAME	MATERIAL	
1	BODY	CF8M	CF8
2	DISC	CF8M	CF8
3	SEAL RING	SS316	SS316
4	STEM	SS316	SS304
5	PTFE	PTFE	
6	HANDWHEEL	HT(C.R.)	
7	BONNET	CF8M	CF8
8	GLAND NUT	SS316	
9	PACKING GASKET	SS316	
10	NUT	SS316	

DIMENSION LIST

SIZE	d	H	L	W
1/2"	15	105	50	70
3/4"	20	108	60	70
1"	25	135	65	80
1-1/4"	32	145	75	80
1-1/2"	40	155	85	90
2"	50	185	95	100

T/L TYPE THREE WAY BALL VALVE 1000PSI

Model: BT-TWV

Size: 1/4" ~ 2"



"L" type or "T" type

▲Reduce bore

▲Size: 1/4"-2"

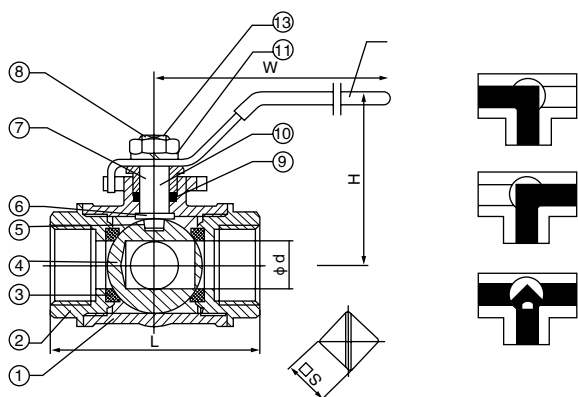
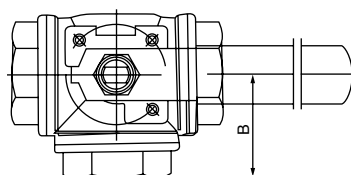
▲Working pressure: 1000PSI

▲Threaded end: BSPT, NPT, ISO 228/1

▲ISO 5211 top-mount pad

▲Optional locked device handle

▲Materials: CF8M (SS316), CF8 (SS304)



MATERIAL LIST

NO.	PART NAME	MATERIAL
1	BODY	CF8M
2	CAP	CF8M
3	SEAT	PTFE
4	BALL	SS 316
5	SEAL RING	PTFE
6	STEM SEAL	PTFE
7	STEM	SS 316
8	ANTI-STATIC DEVICE	SS 304
9	STEM PACKING	PTFE
10	PACKING GLAND	SS 304
11	SPRING WASHER	SS 304
12	HANDLE	SS 304
13	STEM NUT	SS 304

DIMENSION LIST

SIZE	ϕd	L	H	W	B	ISO5211	$\square S$
1/4"	4.2	64	32	85	32.0	F2	(7)
3/8"	6	64	32	95	32.0	F2	(7)
1/2"	10	68	34	108	34.0	F3	(9)
3/4"	15	78	60	115	39.0	F3	(9)
1"	20	86	60	135	43.0	F4	(9)
1-1/4"	25	111	76	150	55.5	F4	(11)
1-1/2"	32	126	85	175	63.0	F5	(11)
2"	40	143	95	190	71.5	F5	(11)

NOTE: () FOR OPTIONAL DIMENSION